



WHS 2012-2013 SUMMER BAND INFORMATION

High School Band Staff Contact Information

Rich Armstrong-Director-rlarm@wisd.org-972-923-4600

Kendra Ray-Assistant Director-kray@wisd.org-972-923-4600

<http://www.spiritofwaxahachie.com>

WHAT'S INSIDE

TOPICS	PAGE
FAQ'S	2
SUMMER BAND INFO	3
MAY 29 MARCHING MINI CAMP	3
BAND CLASS EXPECTATIONS	4
BAND REGISTRATION	5
BAND FEES	6
SPRING TRIP 2013	7
DCI SHOW	7
FALL FOOTBALL/CONTEST SCHEDULE	8
SUMMER CALENDAR	9
INCOMING 9TH GRADERS FAQ'S	10

Waxahachie High School Band

THE place you KNOW you belong!

The *WAXAHACHIE HIGH SCHOOL BAND* is one of THE largest student organizations on campus with over 175 members and operates as one big, happy, diverse musical family. It is unlike ANYTHING you have done before!

Think about it...

- The first day of high school, you can walk through the halls knowing you have more than 175 friends to count on.
- You would be a part of one of the largest organization at Waxahachie.
- Few other classes offer you the opportunity to travel to places like San Antonio, Walt Disney World, Corpus Christi, and Colorado.
- Get your PE AND Fine Arts credit by being in band.
- Our student officers, staff, and band boosters organize social events throughout the year - picnics, lock-ins, etc.

No other class will provide such excitement and fun. You make so many friends and you will LOVE IT !!!



But...

....will band fit into an aggressive academic schedule?

YES!! The *Waxahachie Band* has been host to numerous top ten members in the past three years. In the class of 2009, three of the top ten students including the valedictorian were four year band members. In 2010, we also had the salutatorian and two four year band students in the top ten. In 2011, the valedictorian was our head drum major!

....can I play sports and be in band?

YES!! Quite a few band students participate in athletics. TALK TO US! Let us know what you would like to do and we can help make it happen - regardless of what anyone else tries to say differently!

....do I have to audition for the high school band?

You will be admitted based on the directors' approval and in May we hear you play to get you into the right band class.

....is it difficult to march?

Mr. Armstrong and Ms. Ray marched once upon a time. If they can do it...ANYONE can. Don't worry, we'll teach you everything you need to know step-by-step beginning in May.

....how much time does band REALLY take?

Our out-of-school rehearsals take up 7 hours a week. Obviously, there are football game performances on Friday nights and Saturday contests in October. Like any other competitive group, the "season" is the busiest. Fall is our "season".

....will I struggle to keep my grades up?

That depends on YOU. What we've found is that students who usually have high grades continue to get high grades and those with lower marks usually show improvement. WHY? Aside from an intense influx of strong work ethic, you now have access to a 175+ member study group.

WHS Marching Band Information

Marching Band Contest Show Positions

- Students will earn one of the following positions:
 - Wind, percussion, guard, and/or auxiliary visual
- Selection will be based on, but not limited, to:
 - Attendance and attitude at summer camps
 - Marching and Music skills tests
 - Eligibility (Past and current)
- All eligible students will participate with the band at all performances.
- The best talent will represent the WHS marching band at all contests, festivals, and performances including football games.

Marching Band at Football Games

- All students will participate at all football games.
- Levels of participation will vary depending on the individual assignments.

Options for Oboes and Bassoon Players

- Play in the front percussion ensemble.
- Participate in the color guard.
- Play a saxophone or other marching instrument.

May 29, 30 & June 1, 2012 Mini-Marching Camp

Daily Schedule

9-12 am	Woodwinds
12-1 pm	Lunch
1-4 pm	Brass/Percussion
4:30-7 pm	Guard (T, Th and Fri only)
5-7 pm	Freshman (T, Th and Fri only)

Items Needed For Mini Camp

- Hats, sunscreen
- Workout Clothing
- Appropriate shoes
- 1 gallon water container
- Instruments

Band Hall Summer Hours

- Between 8-12 & 1-4:00 Monday-Thursday.

Sectionals

- Student leaders may schedule sectionals during the summer.

4th of July Parade Practice

- All band students in grades 9-12 in town are expected to attend.
- 2 days of practice prior to parade.
- Parade attire (tennis shoes, white socks, khaki shorts for all students)
- Guard/Woodwinds—Solid red t-shirt; Percussion—Solid white t-shirt; Brass—Solid blue t-shirt.

August Band Camps Starting August 6th

- 7-11:30 and 1-5 daily.
- Attendance is expected from all students.
- Attendance at all scheduled summer activities is one requirement for lettering.
- Please communicate expected absences. Attendance will be considered in assignment of marching positions.
- Students will be working outdoors during the morning sessions between 7-11:30am.
- Please get used to the summer weather. Get outside prior to band camps.
- Plenty of water will be provided *however students are expected to bring their own one-gallon container.*

WHS 2012 SCHOOL DAY BAND SCHEDULE

A Day Schedule

Zero-Jazz Band
A1-Color Guard/Symphonic Band
A2-Concert Band
A3-Conference
A4-Wind Ensemble

B Day Schedule

Zero-Jazz Band
B5-Symphonic Band
B6-Concert Band
B7-Conference
B8-Wind Ensemble/Percussion Class

- Placement in jazz band is by audition only.
- Band Students are expected to enroll in both A and B day sections.
- Percussion will be enrolled in corresponding A day band day class and B8 Percussion Class.
- Band students that participate in Fall Guard will be enrolled in A1 guard class and B day band class.

2012 BAND CLASS EXPECTATIONS

Wind Ensemble & Symphonic Band

- Tryout for Region Band.
- Play a solo at UIL Solo and Ensemble.
- 6 weeks objective tests using Smartmusic Assessments.
- Weekly region band master classes and/or listenings between Sept. and Dec.
- Weekly UIL music sectionals between Jan.- April.
- Expected to participate in private lesson program.
- Expected to participate in all performances in state and out of state.
- Students are expected to enroll in A4 and B8 sections for Wind Ensemble.
- Students are expected to enroll in A1 and B5 sections for Symphonic Band.

Concert Band

- Play a solo at UIL Solo and Ensemble.
- 6 weeks objective tests using Smartmusic Assessments.
- Weekly region band master classes and/or listenings between Sept. and Dec.
- Weekly UIL music sectionals between Jan.- April.
- Expected to participate in private lesson program.
- Expected to participate in all performances in state and out of state.
- Students are expected to enroll in A2 and B6 sections.

Jazz Band

- Tryout for Region Jazz Band.
- Weekly music sectionals.
- Participate in Jazz Café, TCU, and UTA jazz festivals..
- Participate in all performances in state and out of state.

Color Guard

- Open to all students in grades 9-12.
- Expected to participate in marching band-fall and Winterguard-spring.
- Perform a solo at North Texas Colorguard Association Solo and Ensemble contest.
- Students are expected to enroll in A1 dance class.

Marching Band Registration

Saturday, June 9

- Parents are expected to accompany their student to help complete all paperwork and pay fees.
- Band students in grades 8-11 should come during their assigned times to get fitted for the marching uniform.
- All returning students will move through the process much quicker because they already have a uniform.
- It is important that you plan enough time to take care of all steps in the process.
- Make up day is scheduled for August 4, from 9-1 pm.

9:00 am - A-F

9:45 am - G-H

10:30 am - I-O

11:15 am - P-Z

Uniform & Shoe Fitting

- All students will be fitted for a uniform.
- New incoming 8th graders should allow extra time for the uniform fitting process.
- New students will need to be fitted for shoes as well as students needing a new pair.

Band Fees Due

- Summer Band Fees are due by August 4th at Registration.
- See attached schedule of fees and costs associated with being in band.
- Students will not be issued a uniform in August until all fees are paid or an agreement is made.
- If you have any questions regarding these fees please contact Rich Armstrong, 972-923-4600 ext 102, rlarm@wisd.org.

Individual Band Pictures

- All students will take two individual pictures: one with instrument and one in front of green screen for composite.
- Parents will be able to purchase pictures from Bloomfield's Photography.
- Any student missing the initial June 9th sitting will need to take pictures on August 4.
- These photos will be converted into posters and displayed around town at area businesses during the Fall Marching Season, so don't miss this opportunity! This is a Waxahachie tradition!

Volunteer Signup

- All band parents are encouraged to work concessions for at least one football game - either a Tuesday night game, a Wilemon game, or a Thursday or Friday night game at Lumpkins Stadium.
- Volunteer signup forms will be available at registration.

Band Forms

- Information, Handbook, Medical Release, UIL 8 hour rule, and other forms can be completed during the registration process. It is extremely important that we have these forms on file to allow your student to participate throughout the year.

Optional Accessories

- Parents will also be given the opportunity to order optional tote and garment bags for their students as well as purchase yard signs, monogrammed band shirts, hats and blankets.

Marching Band Make Up Registration

Saturday, August 4 (9-12 noon)

2012 Band & Guard Registration (updated 3/29/12)

Grade:	Instrument:	Name:
--------	-------------	-------

STATION	Adult please complete Alternation and Size Information	Adult Authorization
Jacket #		
Bibber #		
Color Guard #		
Hat Size	XS S M L XL XXL Pit Beret	
Shoe Size:	Men's Women's Marching Guard	
T-Shirt Size	S M L XL 2X 3X	

ITEM	NEED	COST	QUANTITY	TOTAL
Marching Shoes	Size:	\$ 35.00		
Marching Gloves	6 pairs	\$ 12.00		
Guard Performance Shoes	Size:	\$ 30.00		
Guard Uniform		\$150.00		
Band Poncho	New and Replacements	\$ 5.00		
Flip Folder	New and Replacements	\$ 5.00		
Tote Bag	Optional	\$ 38.00		
Other Items				
			Sub-Total	
Add 8.25% sales tax for items purchased after August Registration		8.25% Sales Tax Waived for orders at June & August registration		
Band Fees	(t-shirts, uniform maintenance, food)	\$ 130.00		\$ 130.00
Sub-Total				
Credit or Debit on Account				(+/-)
TOTAL AMOUNT DUE				\$

Make check payable to: Waxahachie Band Booster Club

Office Use Only

Cash	T-Shirt Size:
Check #:	Picture Taken: Y N
Credit Card: Visa MC Discover	

Winter Park Ski Music Festival at a Glance



Dates:	April 10-14, 2013 (Late afternoon departure on Tuesday) Return on Sunday afternoon, April 14
Destination:	Winter Park, Colorado
Musical Event/Experience:	Winter Park Ski-Music Festival
Participating Students:	Open to all WHS band students in grades 9-12 willing to commit, pay and/or earn their way through fundraising.
Fundraising Opportunities:	Multiple opportunities will be provided throughout year starting with the T-N-T fundraiser in June.
Approximate Cost per Kid:	\$600-\$700 (Could change depending on number of participants)
Method of Travel:	Chartered Coaches via Busses by Bill
Housing:	Beaver Village Condos 4 to 6 person condos, indoor pool, workout gym, game room
Insurance:	Group Insurance included: Medical Expense \$25,000 and AD&D-\$25,000
Meals :	Students will pick up 5 meals en route and then be responsible for their own meals while in the condos-each condo will plan meals, shop, and prepare
Skis/Poles/Boots/Lift Tickets:	Included with the price of the housing. Full 4 days of skiing included.
Ski Lessons:	All non-skiers must take at least one lesson. Price included.
Non-Skiers:	Snow Tubing, Ice Skating, Snow Cat Tours, Shopping, Gondola Ride, Indoor Pool



Drum and Bugle Corps Contest Lake Highland High School

Tuesday, July 24

7:30 PM

Tickets are \$37.50

Tickets will be purchased for all signatures received by May 4, 2012.

Money will be due June 9, 2012.

Read more: at www.dci.org



WHS 2012 MARCHING BAND FALL SCHEDULE (SUBJECT TO CHANGE)



Before/After School Practice Schedule
(Tentative)

This Schedule will start August 27, 2012.

Winds/Drumline/Guard

- Monday 7-8 am
- Tuesday 5:30-8:30 pm
- Thursday 4:15-6:15 pm
- Friday 7-8 am

Region Band Sectionals

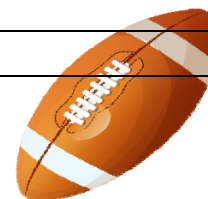
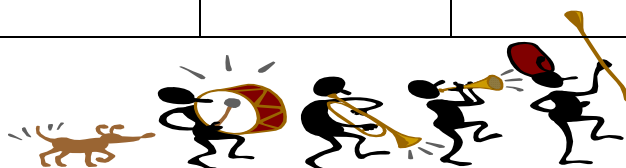
Sept. 3- Oct. 2

Region Band Listeningings

Nov. 5-Dec.6

Football and Fall Marching Schedule (Tentative/Subject to change)

Date	Event	Site	Time	Other Info
Aug. 4	Registration	HS	9-1 pm	Make-up
Aug. 11	Car Wash	HS	9-2 pm	
Aug. 17	Ice Cream Social	HS	8:00 PM	In Stadium
Aug. 23	Meet Indians	HS	8:00 PM	In Stadium
Aug. 31	Midlothian	Away	7:30	
Sept. 14	West Mesquite	Home	7:30 PM	
Sept. 21	Corsicana	Away	7:30 PM	
Sept. 28	Summit	Home	7:30 PM	
Oct. 5	Lancaster	Away	7:30 PM	
Oct. 6	Midlothian Contest	Midlothian		
Oct. 10	UIL Marching	Midlothian	TBA	Wednesday Contest
Oct. 12	Legacy	Home	7:30 PM	Pink Out Game
Oct. 13	Desoto Contest	Desoto		
Oct. 19	Seguin	Home	7:30 PM	Homecoming
Oct. 26	Lake Ridge	There	7:30 PM	
Nov. 2	Red Oak	Home	7:30 PM	Senior Night
Nov. 3	Duncanville Contest	Duncanville		
Nov. 9	Ennis	Away	7:30 PM	
Nov. 16	Playoff 1			
Nov. 23	Playoff 2			



WHS May-August Band Schedule 2012

May	Event	Time	Location
1-6	Musical-Grease		FAC
7	Finley Spring Concert	7 pm	FAC
8	HS Scholarship Concert	7 pm	FAC
9	WW Leadership Auditions	4:15-6:15	Band Hall
10	WISD Showcase-Percussion Perform		Waxahachie Civic Center
11	Drum Major Auditions	4:30-7:30	Band Hall
12	WHS Band Car Wash w/8th graders	9-2 pm	High School Parking Lot
14	Band Booster Mtg.	7 pm	Band Hall
14-16	Guard Tryout Sessions	4:30-6:30	Band Hall
15	Brass Leadership Auditions	4:15-6:15	Band Hall
16	Percussion Leadership Auditions	4:15-6:15	Band Hall
17	Howard Spring Concert	7 pm	FAC
18	Band Banquet	6:30 pm	Midlothian
19	Guard Auditions	10-1 pm	Band Hall
22	Incoming 8th Grade Orientation	7 pm	HS Band Hall
27-28	State Solo and Ensemble Contest		Austin, TX
29-1	Band Mini-Marching Camp	See p.7	Band Hall
June			
9	Band Registration	See p. 5	Band Hall
11-12	Leadership Workshop w/Ferrito	8 am-6 pm	Band Hall
25-29	Drumline Camp, Guard Camp	9-5 pm	Band Hall
July			
2	Parade Practice	9-12 noon	Band Hall
3	Parade Practice	9-12 noon	Band Hall
4	Parade	10 am	Meet at Post Office
4	Band Picnic after Parade	11:30	Getzendaner Park
24	DCI Show in Dallas	TBA	Lake Highland HS
30-31	Drumline Camp, Guard Camp	9-5 pm	Band Hall
August			
1-3	Drumline Camp, Guard Camp	9-5 pm	Band Hall
1-3	Incoming Freshman Practice	9-1 pm	Band Hall
1-3	Leadership Practice	2:30-4 pm	Band Hall
4	Make-up Band Registration	9-1 pm	Band Hall
6-10	Band Camp	7-11:30/1-5 pm	Band Hall
10	Band Luau	6-10 pm	TBA
11	Band Car Wash	9-2 pm	High School
13-17	Band Camp	7-11:30/1-5 pm	Band Hall
17	Ice Cream Social	8 pm	Stadium
20-21-23	Band Practice	5-9 pm	Band Hall
27	School Starts-no morning practice		

Incoming 9th Grade FAQ's

- ⇒ ***When are the incoming 9th grade camps?***
May 29, 31, and June 1 from 5-7 pm; July 2/3 from 9-12 noon; August 1-3 from 9-1 pm
- ⇒ ***Do we have to do anything over the summer?***
Yes. Students are encouraged to practice their instruments, participate in all scheduled band activities if in town, and start an exercise routine to prepare for strength and endurance needed in marching band.
- ⇒ ***Do we have to audition to be in the marching band?***
No. All students will be placed in the marching band. Placement in the contest show will be determined by band auditions, attendance, and performance tests on basic skills during practice.
- ⇒ ***Do we have to be in the marching band?***
Yes. All students enrolled in the WHS band program are expected to participate with the marching band. Students receive PE credit for participation.
- ⇒ ***When will we find out what band we made?***
All band students are initially placed in a concert band in the spring based on recommendations from their band directors. Once the spring audition is final student schedules will be changed to reflect the new results.
- ⇒ ***How much time should we allow for the June 9 registration?***
Allow an hour to complete all paperwork, uniform fitting, and picture taking.
- ⇒ ***Are instrument rentals available to incoming 9th graders?***
Yes. All school owned instruments will be made available on June 9th. Rental fee is \$100 for the school year.
- ⇒ ***Is band double blocked?***
Yes. We encourage all band students to double block. However, we understand that some students have conflicts. Students must meet with a band director prior to single blocking. Many times most conflicts can be worked out.
- ⇒ ***Can students enroll in band, choir, and theatre?***
Yes. We have many students that participate in band, choir, and theatre. Schedules are determined on an individual basis.
- ⇒ ***Can students participate in sports and band?***
Yes. However, most athletic classes are double blocked. We advise all band students to do both band and athletics for all four years. We have had many varsity football, baseball, basketball, soccer, and softball students in our band program through the years.
- ⇒ ***Can I still perform in Marching Band if I am involved with a fall sport?***
Yes and no. Due to the nature of the schedule, it is easier to manage some sports conflicts over others. There are more schedule conflicts with varsity football and volleyball, because they also perform on Friday nights. Cross country schedules are much easier to manage with marching band.
- ⇒ ***Is the color guard part of the band?***
Yes. We recruit non instrumentalists for the fall color guard which participates with the marching band. We allow all students including instrumentalists to participate in the winterguard. All non instrumentalists in the guard must sign up for the A1 guard/dance class.