

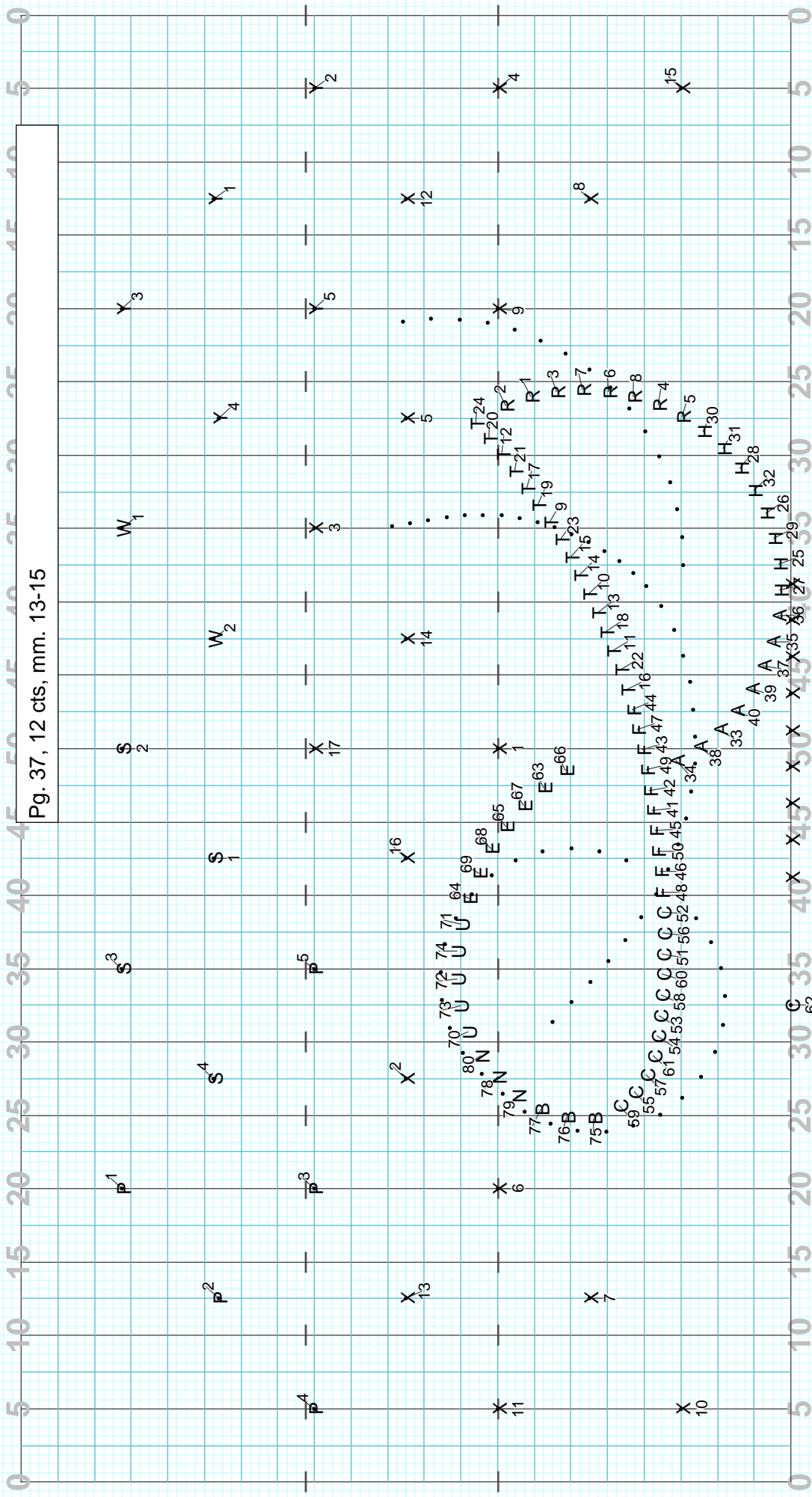
Director Viewpoint

Pg. 36, 16 cts, mm. 9-12, grd/drums-single flag work

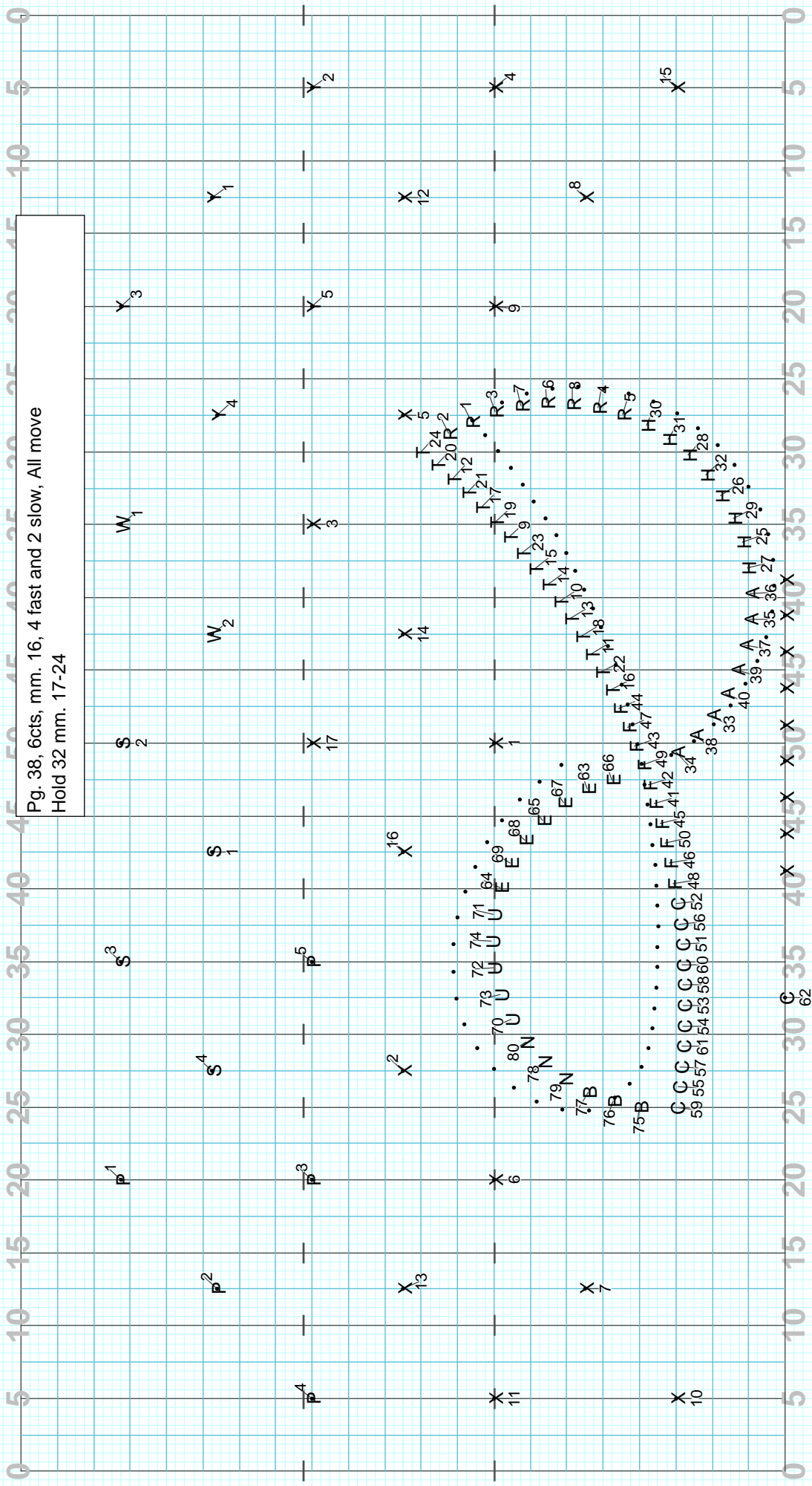
The score is organized into four systems, each with four measures:

- System P (P1-P4):** P1 (20-25), P2 (10-15), P3 (25-30), P4 (5-10). Includes notes like P1, P2, P3, P4, P5, P6, P7, P8, P9, P10, P11, P12, P13, P14, P15, P16, P17, P18, P19, P20, P21, P22, P23, P24, P25, P26, P27, P28, P29, P30, P31, P32, P33, P34, P35, P36, P37, P38, P39, P40, P41, P42, P43, P44, P45, P46, P47, P48, P49, P50, P51, P52, P53, P54, P55, P56, P57, P58, P59, P60, P61, P62, P63, P64, P65, P66, P67, P68, P69, P70, P71, P72, P73, P74, P75, P76, P77, P78, P79, P80, P81, P82, P83, P84, P85, P86, P87, P88, P89, P90, P91, P92, P93, P94, P95, P96, P97, P98, P99, P100.
- System S (S1-S4):** S1 (40-45), S2 (50-55), S3 (35-40), S4 (25-30). Includes notes like S1, S2, S3, S4, S5, S6, S7, S8, S9, S10, S11, S12, S13, S14, S15, S16, S17, S18, S19, S20, S21, S22, S23, S24, S25, S26, S27, S28, S29, S30, S31, S32, S33, S34, S35, S36, S37, S38, S39, S40, S41, S42, S43, S44, S45, S46, S47, S48, S49, S50, S51, S52, S53, S54, S55, S56, S57, S58, S59, S60, S61, S62, S63, S64, S65, S66, S67, S68, S69, S70, S71, S72, S73, S74, S75, S76, S77, S78, S79, S80, S81, S82, S83, S84, S85, S86, S87, S88, S89, S90, S91, S92, S93, S94, S95, S96, S97, S98, S99, S100.
- System X (X1-X4):** X1 (10-15), X2 (20-25), X3 (30-35), X4 (40-45). Includes notes like X1, X2, X3, X4, X5, X6, X7, X8, X9, X10, X11, X12, X13, X14, X15, X16, X17, X18, X19, X20, X21, X22, X23, X24, X25, X26, X27, X28, X29, X30, X31, X32, X33, X34, X35, X36, X37, X38, X39, X40, X41, X42, X43, X44, X45, X46, X47, X48, X49, X50, X51, X52, X53, X54, X55, X56, X57, X58, X59, X60, X61, X62, X63, X64, X65, X66, X67, X68, X69, X70, X71, X72, X73, X74, X75, X76, X77, X78, X79, X80, X81, X82, X83, X84, X85, X86, X87, X88, X89, X90, X91, X92, X93, X94, X95, X96, X97, X98, X99, X100.
- System Y (Y1-Y4):** Y1 (15-20), Y2 (25-30), Y3 (35-40), Y4 (45-50). Includes notes like Y1, Y2, Y3, Y4, Y5, Y6, Y7, Y8, Y9, Y10, Y11, Y12, Y13, Y14, Y15, Y16, Y17, Y18, Y19, Y20, Y21, Y22, Y23, Y24, Y25, Y26, Y27, Y28, Y29, Y30, Y31, Y32, Y33, Y34, Y35, Y36, Y37, Y38, Y39, Y40, Y41, Y42, Y43, Y44, Y45, Y46, Y47, Y48, Y49, Y50, Y51, Y52, Y53, Y54, Y55, Y56, Y57, Y58, Y59, Y60, Y61, Y62, Y63, Y64, Y65, Y66, Y67, Y68, Y69, Y70, Y71, Y72, Y73, Y74, Y75, Y76, Y77, Y78, Y79, Y80, Y81, Y82, Y83, Y84, Y85, Y86, Y87, Y88, Y89, Y90, Y91, Y92, Y93, Y94, Y95, Y96, Y97, Y98, Y99, Y100.

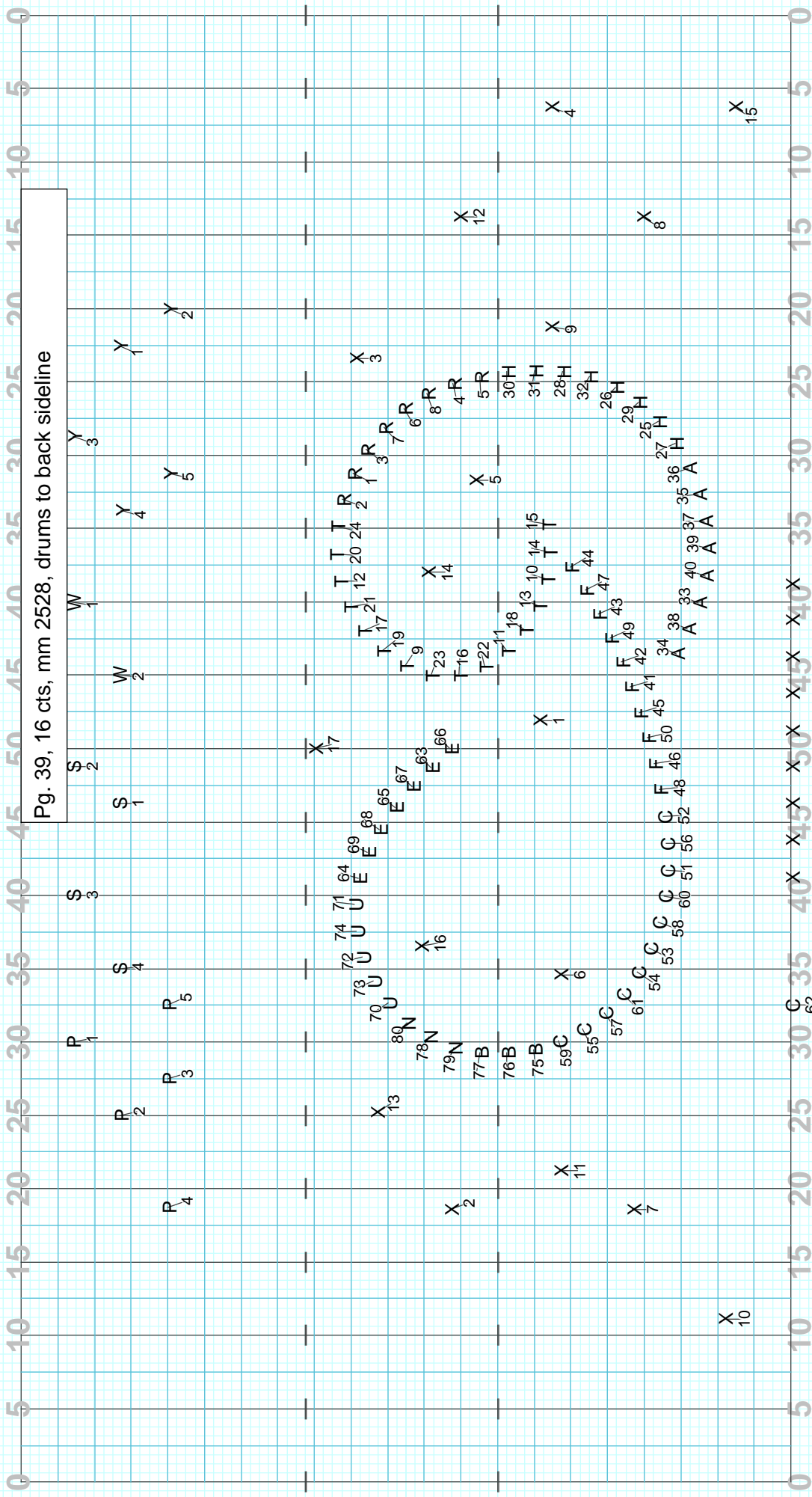
Director: Viewpoint



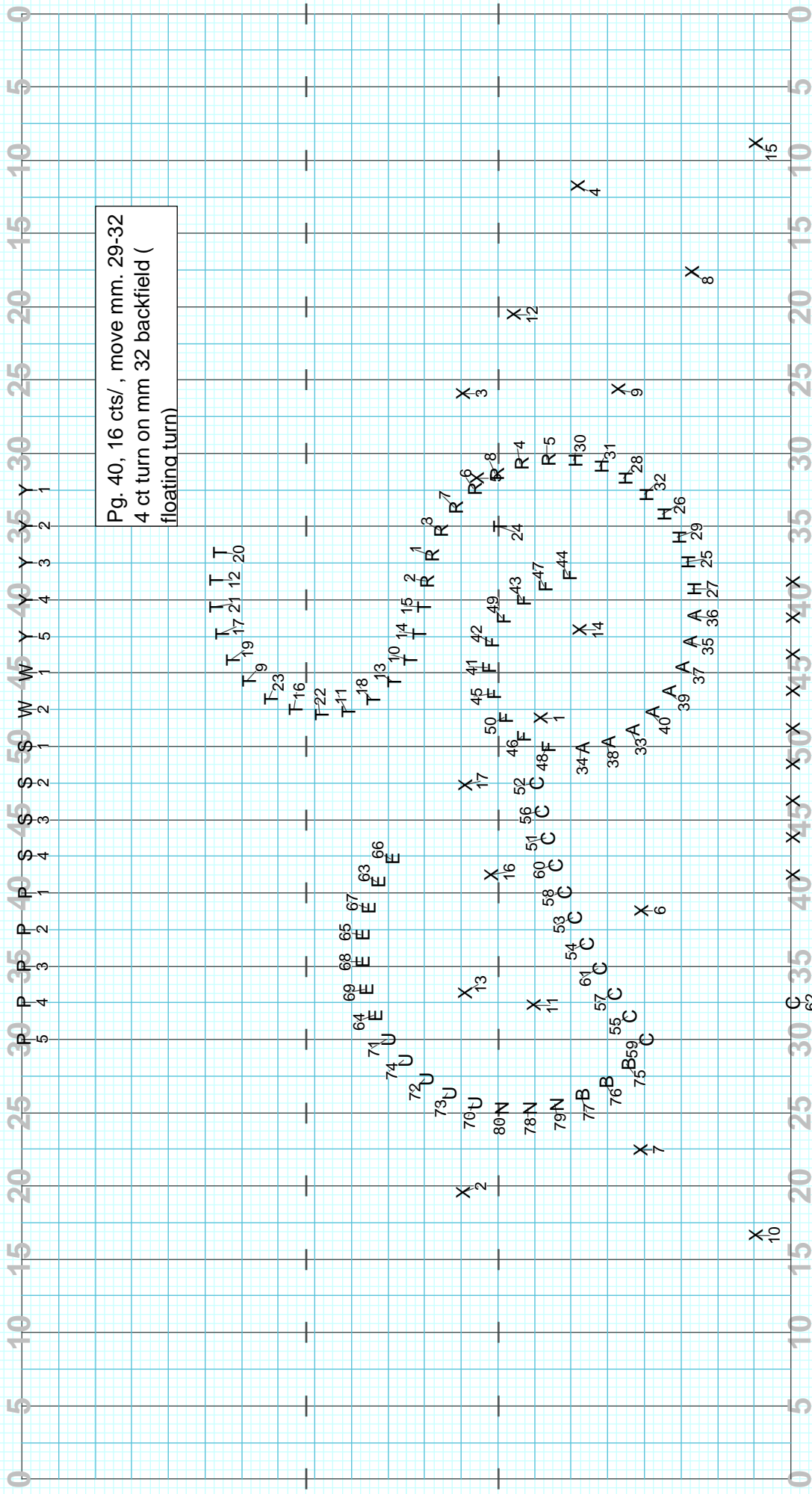
Director Viewpoint



Director Viewpoint



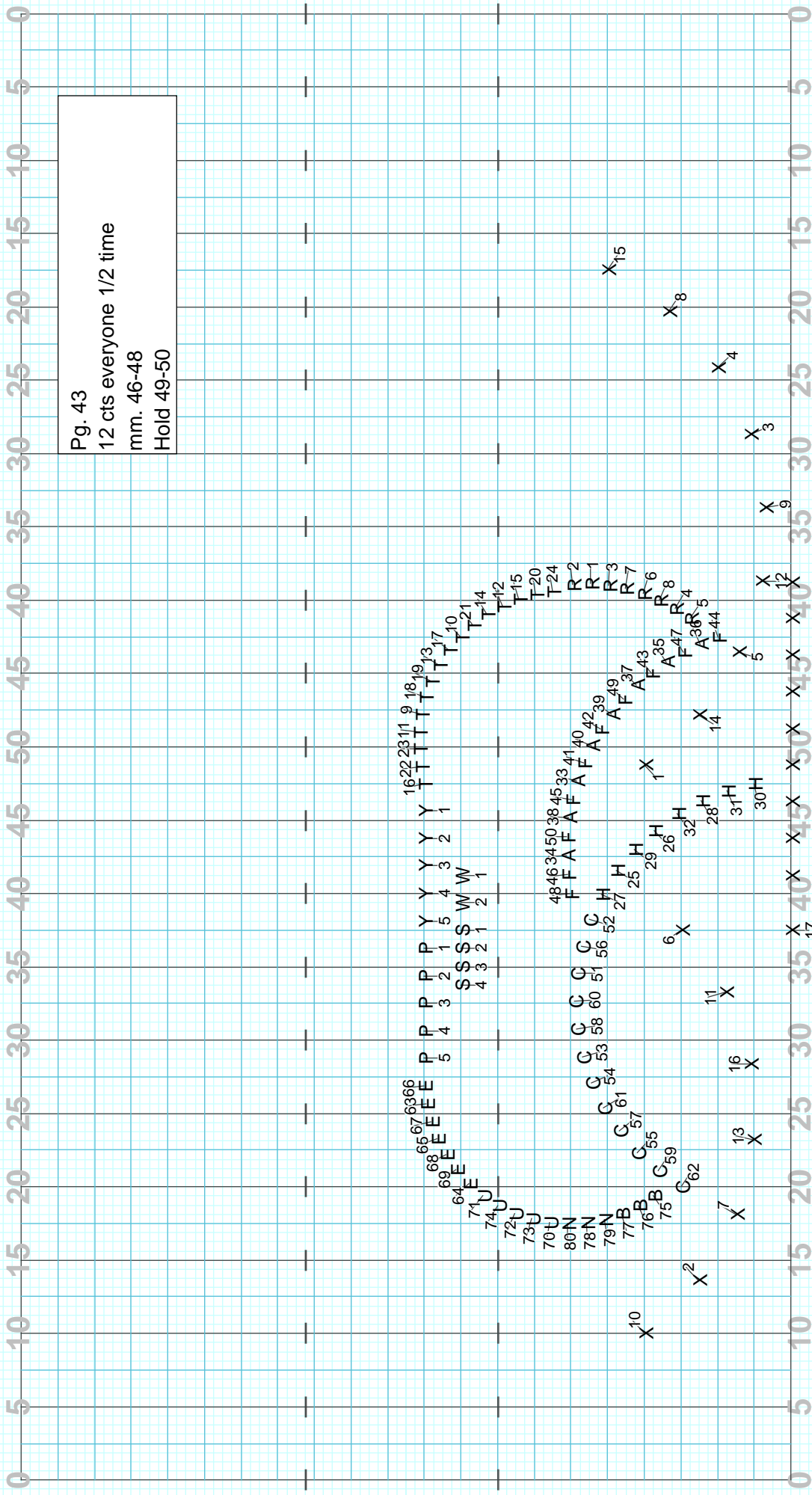
Director Viewpoint



Director Viewpoint

Pg. 42
 16 cts (1/2 time for winds db x for drums)
 mm 42-45 (all 4 ct turn to front on last 2 beats)
 grd move to 43-no work here

Director: Viewpoint



Pg. 43
 12 cts everyone 1/2 time
 mm. 46-48
 Hold 49-50

Director: Viewpoint

Licensed to: Rich Armstrong/created on Pyware 3D.