

Clarinet - Scale Sheet No. 2

Concert B-flat Major (Your C Major Scale)



Concert E-flat Major (Your F Major Scale)



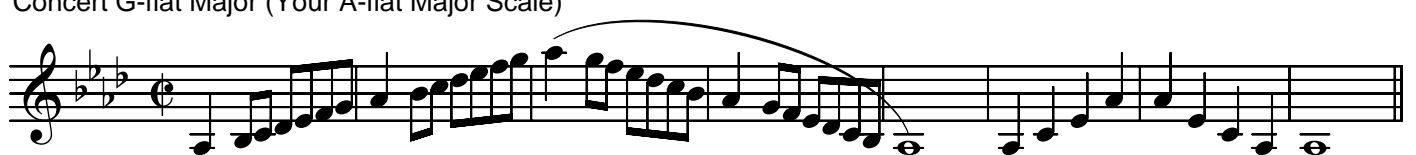
Concert A-flat Major (Your B-flat Major Scale)



Concert D-flat Major (Your E-flat Major Scale)



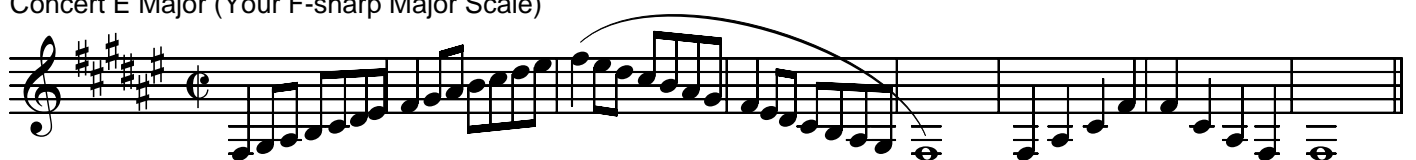
Concert G-flat Major (Your A-flat Major Scale)



Concert C-flat/B Major (Your D-flat Major Scale)



Concert E Major (Your F-sharp Major Scale)



Concert A Major (Your B Major Scale)



Concert D Major (Your E Major Scale)

Musical notation for Concert D Major (Your E Major Scale). The piece is in treble clef with a key signature of three sharps (F#, C#, G#) and a common time signature. It features a melodic line with a long, sweeping slur over the first half, followed by a descending scale and a final whole note chord.

Concert G Major (Your A Major Scale)

Musical notation for Concert G Major (Your A Major Scale). The piece is in treble clef with a key signature of two sharps (F#, C#) and a common time signature. It features a melodic line with a long, sweeping slur over the first half, followed by a descending scale and a final whole note chord.

Concert C Major (Your D Major Scale)

Musical notation for Concert C Major (Your D Major Scale). The piece is in treble clef with a key signature of one sharp (F#) and a common time signature. It features a melodic line with a long, sweeping slur over the first half, followed by a descending scale and a final whole note chord.

Concert F Major (Your G Major Scale)

Musical notation for Concert F Major (Your G Major Scale). The piece is in treble clef with a key signature of one sharp (F#) and a common time signature. It features a melodic line with a long, sweeping slur over the first half, followed by a descending scale and a final whole note chord.

Chromatic * = chromatic fingering

Musical notation for Chromatic exercise (first line). The piece is in treble clef with a common time signature. It shows a chromatic scale starting on C4, moving up stepwise to G4. Asterisks (*) are placed below the notes C4, D4, E4, F4, G4, and A4 to indicate chromatic fingering.

Musical notation for Chromatic exercise (second line). The piece is in treble clef with a common time signature. It shows a chromatic scale starting on G4, moving up stepwise to D5. Asterisks (*) are placed below the notes G4, A4, B4, C5, D5, and E5 to indicate chromatic fingering.

Musical notation for Chromatic exercise (third line). The piece is in treble clef with a common time signature. It shows a chromatic scale starting on D5, moving down stepwise to G4. Asterisks (*) are placed below the notes D5, C5, B4, A4, G4, and F4 to indicate chromatic fingering.