

Tenor Sax - Scale Sheet No. 2

Concert B-flat Major (Your C Major Scale)



Concert E-flat Major (Your F Major Scale)



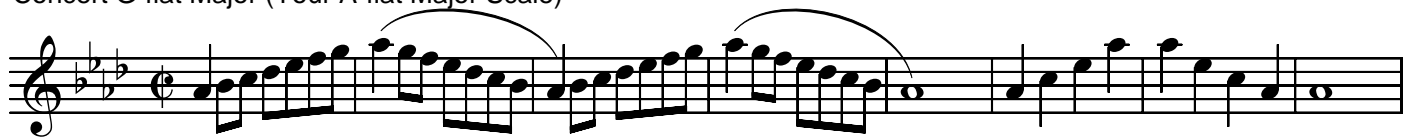
Concert A-flat Major (Your B-flat Major Scale)



Concert D-flat Major (Your E-flat Major Scale)



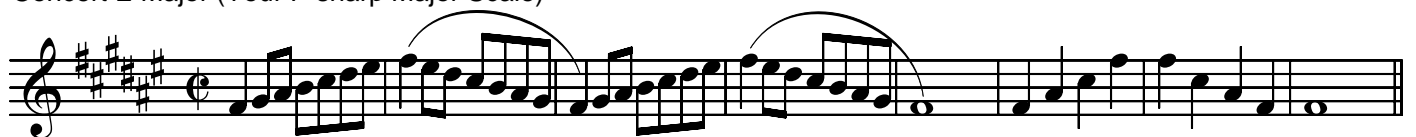
Concert G-flat Major (Your A-flat Major Scale)



Concert C-flat/B Major (Your D-flat Major Scale)



Concert E Major (Your F-sharp Major Scale)



Concert A Major (Your B Major Scale)



Concert D Major (Your E Major Scale)

Musical notation for Concert D Major (Your E Major Scale). The piece is in treble clef with a key signature of three sharps (F#, C#, G#) and a common time signature. It features a series of eighth-note runs with slurs, ascending and then descending, ending with a whole note.

Concert G Major (Your A Major Scale)

Musical notation for Concert G Major (Your A Major Scale). The piece is in treble clef with a key signature of two sharps (F#, C#) and a common time signature. It features a series of eighth-note runs with slurs, ascending and then descending, ending with a whole note.

Concert C Major (Your D Major Scale)

Musical notation for Concert C Major (Your D Major Scale). The piece is in treble clef with a key signature of one sharp (F#) and a common time signature. It features a series of eighth-note runs with slurs, ascending and then descending, ending with a whole note.

Concert F Major (Your G Major Scale)

Musical notation for Concert F Major (Your G Major Scale). The piece is in treble clef with a key signature of one sharp (F#) and a common time signature. It features a series of eighth-note runs with slurs, ascending and then descending, ending with a whole note.

Chromatic * = chromatic fingering

Musical notation for Chromatic scale with chromatic fingering. The piece is in treble clef with a common time signature. It shows two lines of chromatic scales. The first line is an ascending chromatic scale from C4 to C5, and the second line is a descending chromatic scale from C5 to C4. Asterisks (*) are placed above certain notes to indicate chromatic fingering. The piece ends with a double bar line.